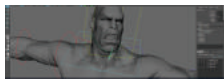


Demo Reel Breakdown



Another Tomorrow Wolf Rig: (2015) Short Film; Biped and quadruped rigging, facial rigging, and ear/tail dynamics using Maya



Orc Rig: (Summer 2015) CG Society Rigging Class; Biped character rigging, and skinned bicep and chest muscle primitives using Maya



Angina: (2014) Orca Health, Inc; Heart and nervous system rigging, video animation, lighting, rendering, and compositing using Maya, Composite, and After Effects



AC Repair: (2014) Orca Health, Inc; Tendon graft rigging and video animation, lighting, rendering, and compositing using Maya, Composite, and After Effects



MCL Tear: (2013) Orca Health, Inc; Tendon tear modeling, rigging, and shading, and video animation, lighting, rendering, compositing using Maya, Mudbox, Composite, and AE



Another Tomorrow Girl Rig: (2015) Short Film; Skin weighting and facial rigging as well as cloth and ear dynamics using Maya



Another Tomorrow Chain Rig: (2015) Short Film; Prop rigging and dynamics using Maya



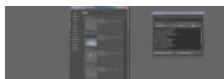
Cerebus the Aardvark: (2013) Independent Film; Vest and chain rigging and dynamics using Maya



Cell Membrane Script: (2015) Orca Health, Inc; Script that is used to generate cancer cell rigs on top of an existing particle system using Maya, Python, MEL, and Maya UI



3D Team Version Control Plugin: (2015-2016) Orca Health, Inc; Plugin script that is used to commit Maya scene changes and check-in or check-out a given scene using Maya, MEL, PyMEL, Python, and Maya Python API with PySide/PyQt window development



Asset Management Plugin: (2015-2016) Orca Health, Inc; Plugin script used to keep track of all 3D team assets. Also allows importing and referencing into Orca Health projects. Used Maya, MEL, PyMEL, Python, and Maya Python API with PySide/PyQt window development



Render Batch Plugin: (2015-2016) Orca Health, Inc; Plugin script that exports any scene or multiple scenes to a .bat file and allows to auto-render a render queue using Maya, MEL, PyMEL, Python, and Maya Python API with PySide/PyQt window development



Setup Composite Plugin: (2015) Orca Health, Inc; Plugin that automatically imports all render layers for a given project, sets up and prepares the scene for render using Composite, Python, and Composite Python API



Render Composite Plugin: (2015) Orca Health, Inc; Plugin that renders the entire scene once it is setup to the desired location produced by the setup composite plugin, opens After Effects, and sets up video for final export using Composite, Python, Composite Python API, After Effects, and Javascript